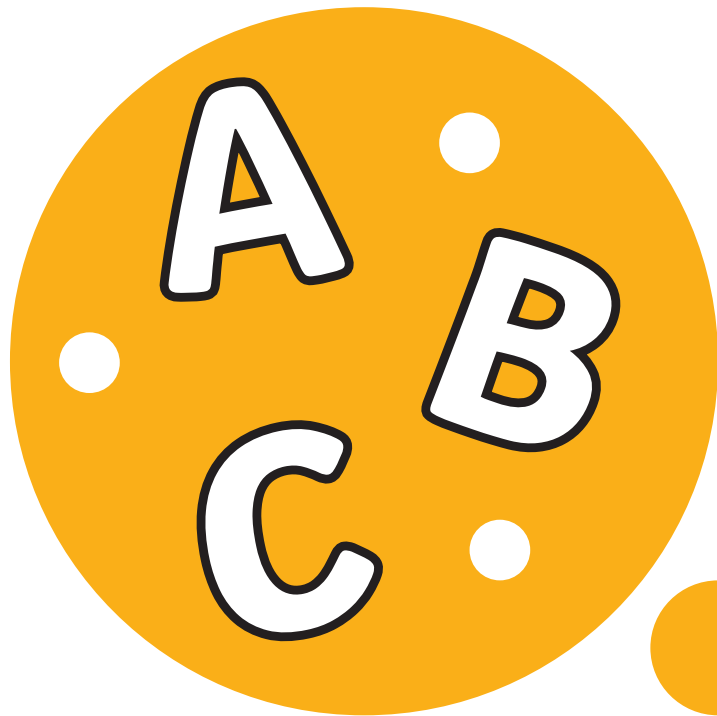
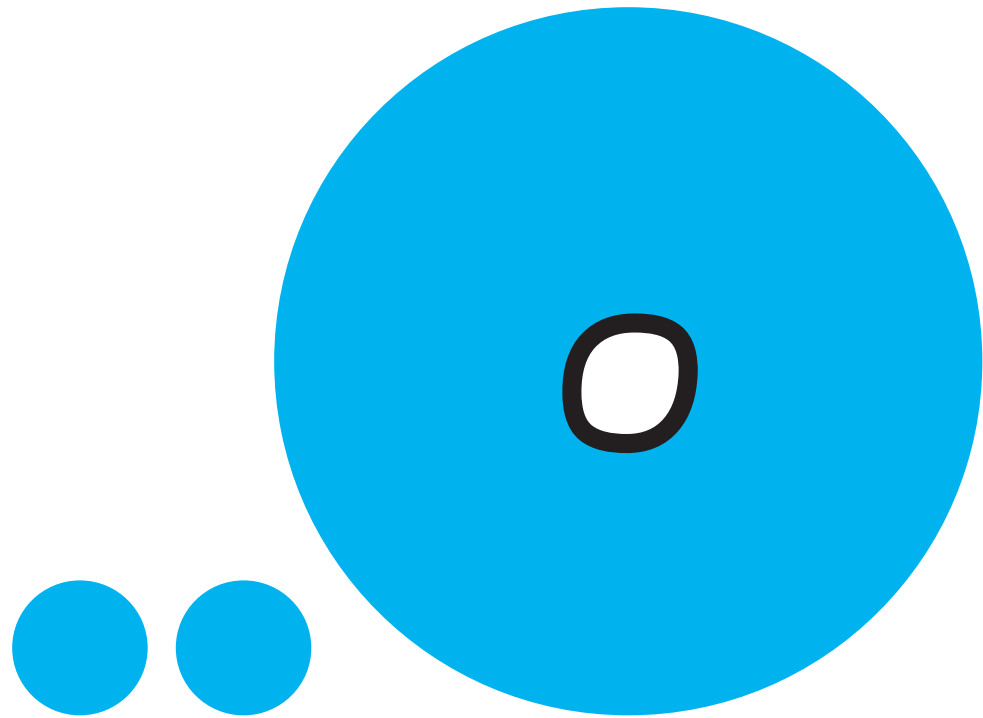
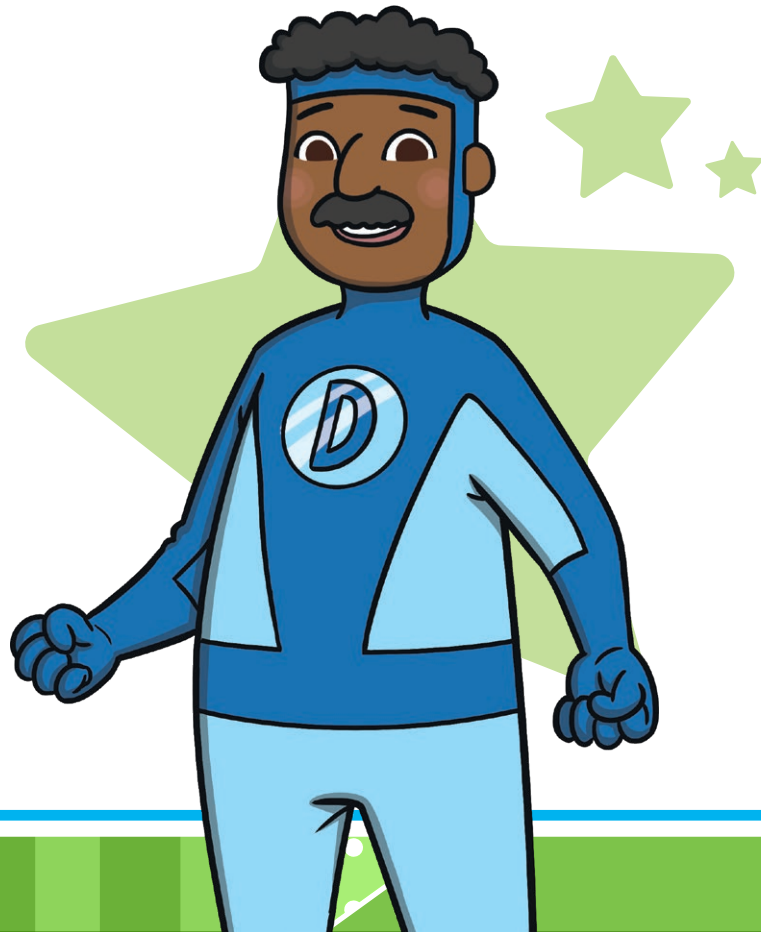


**Every sentence should start
with a capital letter.**



Every sentence should end
with a **full stop.**



Make sure that you put a **finger space** between each word.

The superhero saved the day.



Check that you have written
your letters the **right way** round.

H910

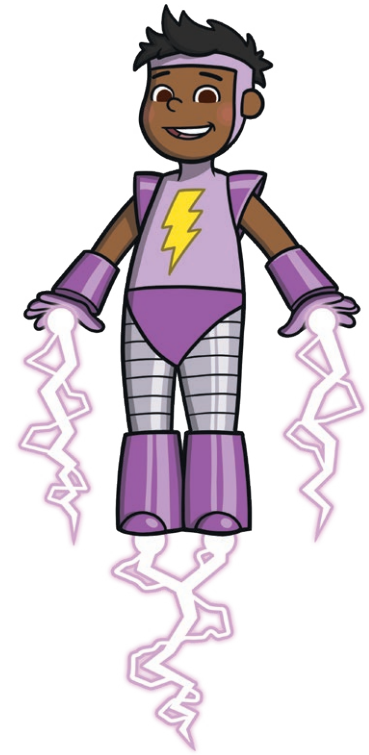
Hero



Your letters should all
be the **same size.**



superhero



superhero

Try to use lots of **conjunctions**
in your sentences.

since
because
but
since
yet
when
while
although
and



Try to use lots of **awesome**
adjectives in your sentences.



unusual

rapid

bright

eager

little

big

brave

frightened

swift

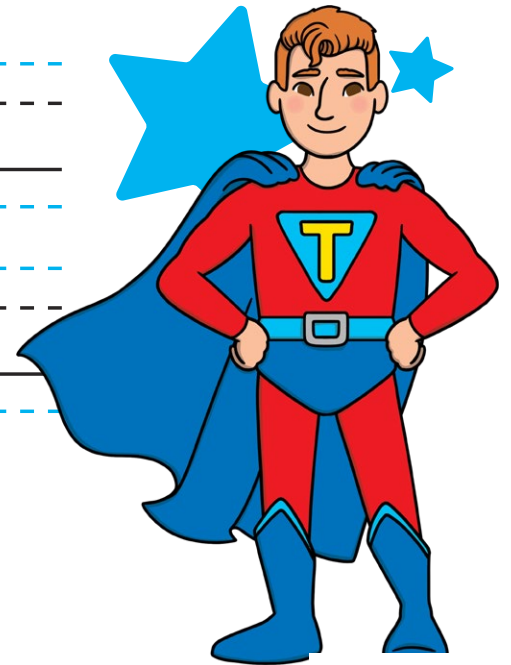
Read your sentence to yourself.
Does it **make sense**?



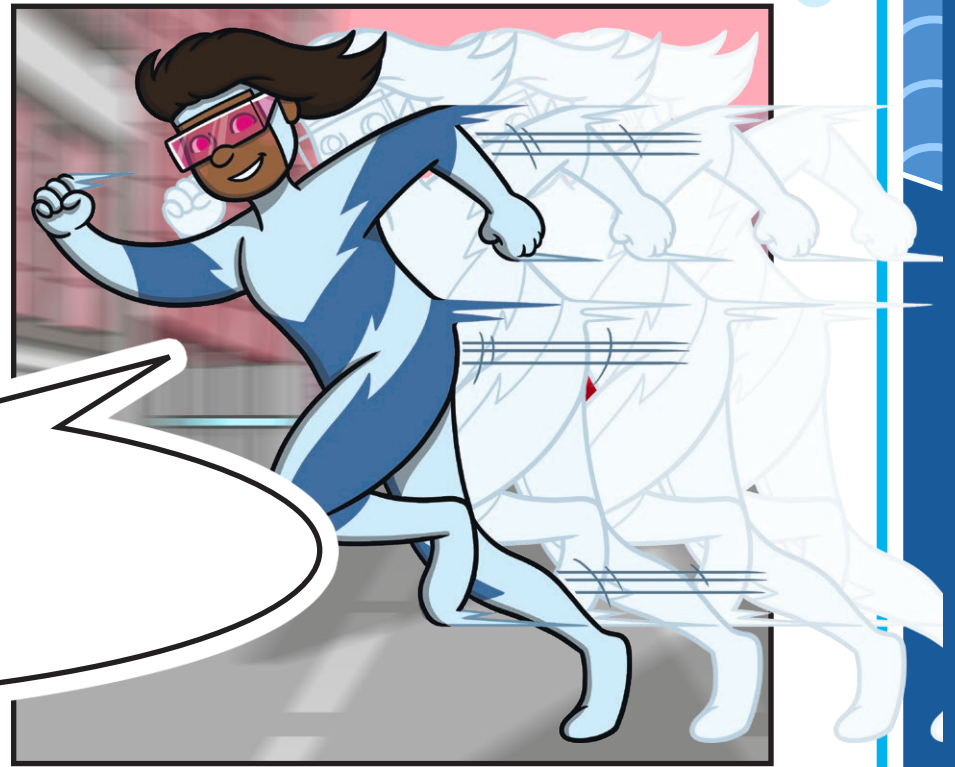
Make sure that your
letters **sit on the line.**



The superheroes
arrived on time.



Make sure that your letters with
tails descend **under the line.**



Quickly!

Make sure that your tall letters
ascend **above the smaller letters.**



Let's do our best!



Remember to end any exclamations
with an **exclamation mark!**



Have you used a **question mark** at the end of all of your questions?

